

USER GUIDE

Intramuscular Injection Buttocks model

(Adult Buttocks model, Model Name : BT-CSIM2)

- Index -

1. Cautions -----	2
-	
2. Components of BT-CSIM II -----	3
3. Features and Functions of BT-CSIM II -----	4
-	
4. Installation -----	5
5. User Manual -----	8
6. Maintenance and storage -----	9

1. Cautions

* This manual describes how to use BT-CSIM II properly.

Read it carefully to avoid damaging the product and injuring yourself.

Pay attention to the following series of warnings.

- ① Use only components provided or approved by BT Inc.
- ② Do not disassemble, repair, or modify this product on your own.
- ③ Do not use the product in locations with temperatures below 0°C or above 40°C.
(Operation temperature : 0°C ~ 40°C, Storage temperature : -10°C ~ 50°C)
- ④ Do not keep the product near hot places such as heaters. Transformation of product or internal damage may occur.
- ⑤ Never clean the product with chemical substances such as solvent, benzene or thinner, as these may cause ignition, electric shock or cause the surface to deteriorate.
- ⑥ Only clean-water(filtered water) is allowed for injection.(Never use the other liquids)
- ⑦ BT Inc. can change or modify the product specification without any notice in order to improve the product.

2. Components of BT-CSIM II



(1) Buttocks model : Adult Buttocks model

- Buttocks Body Model – 1 ea

(2) Accessories

- ① Buttocks holder – 1 ea
- ② Drain bottle (including one drain tube) – 1 ea
- ③ Air pumping syringe – 1 ea
- ④ Storage Case – 1 ea

3. Features and functions of BT-CSIM II



- ① Buttocks model
- ② Air pumping connector
- ③ Fluid drain connector
- ④ Buttocks holder
- ⑤ Drain bottle
- ⑥ Drain tube
- ⑦ Air pumping syringe
- ⑧ Storage Case

4. Installation

– Buttocks model before installation



4-1. Buttocks holder installation



- Please push the buttocks holder on the top of buttocks model until the holder snaps in the cover plate.
- The buttocks holder keeps the buttocks position when you practice the injection.
- ※ The red mark should be located up right position when you assemble the holder to the buttocks model.

4-2. Buttocks holder separation



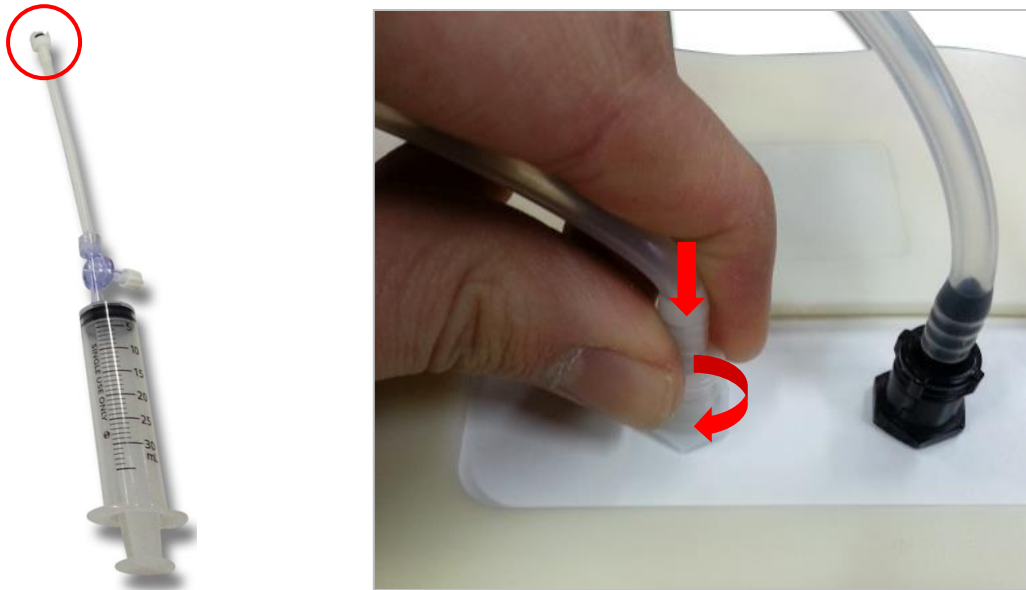
- Press the hook levers on the cover plate with both thumbs and lift up the buttocks holder.

4-3. Drain bottle installation

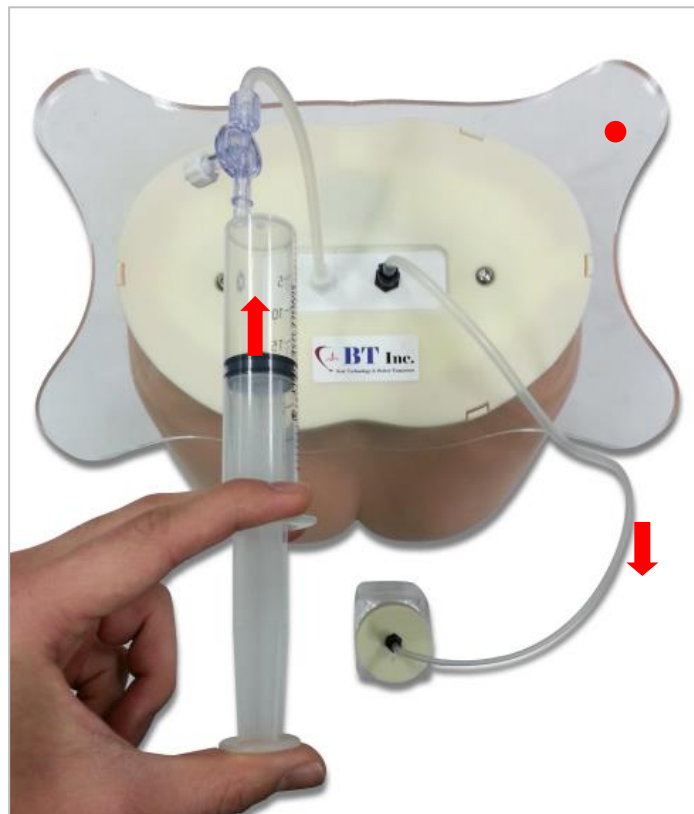


- Please connect the drain tube to drain container and drain connector(black color)

4-4. Air pumping syringe connection



- Please connect the air pumping syringe to the air injection connector(white color).



- ※ In order to drain the injected liquid from the buttocks model, pull and push the syringe piston with multiple times.

5. User Manual

- (1) Assemble the all accessories as mentioned in chapter 4.
- (2) You can feel the greater trochanter and ilium (Iliac spine, ASIS, PSIS) by palpation.
- (3) Please follow the procedure of IM injection.
- (4) For drug injection practice, you must connect the drain bottle.
- ※ Please use the purified-water only for drug injection.**
- (5) After practice, evacuate the injected liquid from the buttocks model using air pumping syringe according to the chapter 4-4.



[Dorsogluteal site]

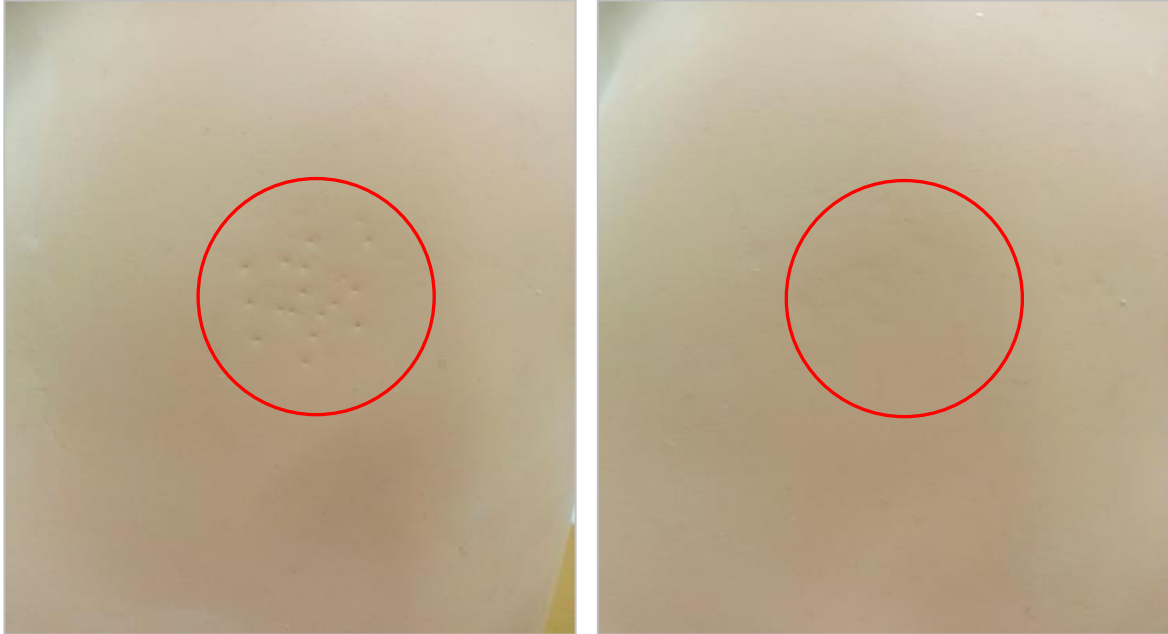


[Ventrogluteal site]

6. Maintenance and storage

(1) If there is a needle marks after injection practice, just rub the site 5~6 times.

Then marks will be disappeared naturally.



(2) If you need to store the product for long periods of time, please wipe the product with **ethanol cotton** or **fabric**. After the buttocks model is dried, please putting the “Baby powder” all around the buttocks skin and wipe the product again with your hands or soft clothes.

