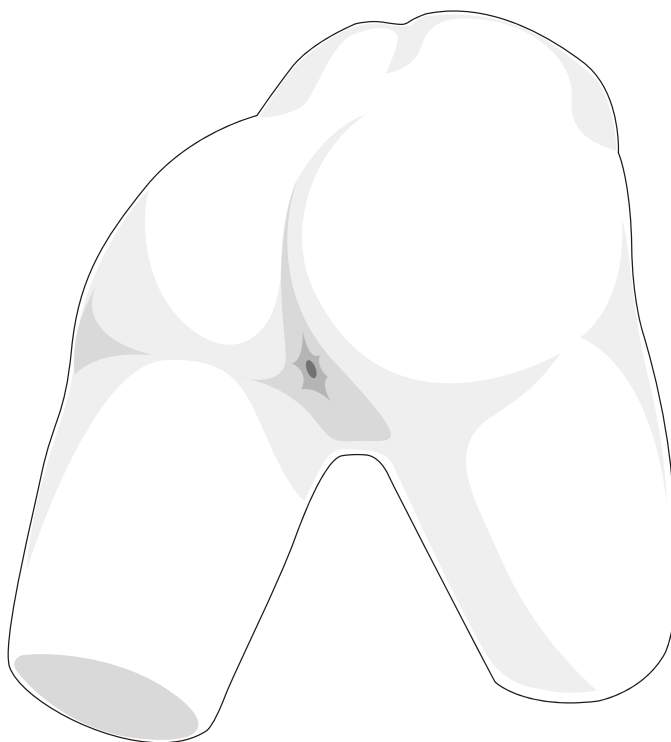


BT-CSEN

# Enema Training Model

## USER'S GUIDE



## Product Information

Product Name	Enema Training Model
Model Name	BT-CSEN
Manufacturer	BT Inc.
Country of Origin	South Korea

## Product Specifications

Size	330 x 430 x 340 mm
Weight	3.5kg

## Customer Service

Web-site	<a href="http://www.btinc.co.kr">www.btinc.co.kr</a>
Address	Headquarter : A-313 Samsung Techno-valley, 140, Tongil-ro, Deogyang-gu, Goyang-si, Gyeonggi-do, 10594, South Korea
Contacts	Sales : Busan Building 5F, 27, Jeonpo-daero 92beon-gil, Nam-gu, Busan 48404, South Korea
E-mail	Headquarter : +82-2-2038-2903 Sales : +82-51-903-1144 <a href="mailto:bt@btinc.co.kr">bt@btinc.co.kr</a>

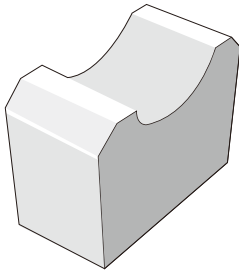
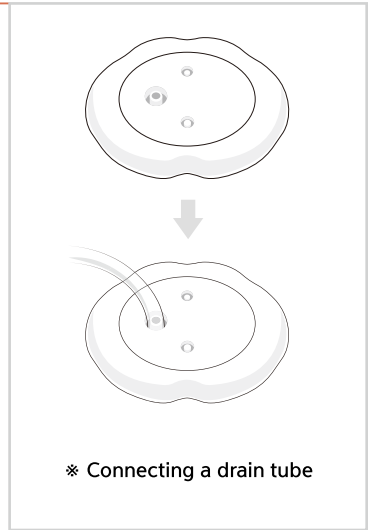
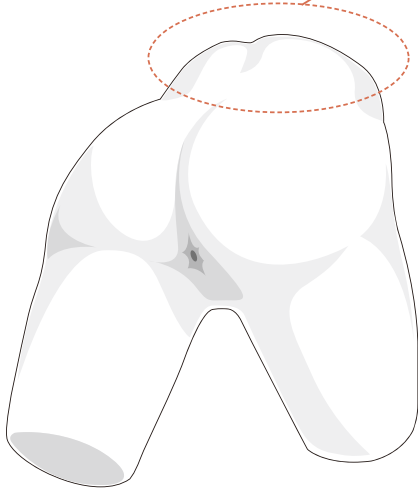
# **■ Cautions**

Please read it carefully to ensure correct usage and user's safety through understanding of the product.

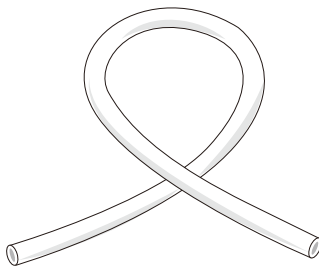
- ① Use only components provided or approved by BT Inc.
- ② Do not use the product for other purposes described in the manual.
- ③ If you disassemble or modify the product without any permission by BT Inc, you cannot get the warranty. Also, making imitated or altered products for commercial purposes are prohibited by law.
- ④ Keep the product away from water and moisture.
- ⑤ Do not keep the product near hot or cold environments as possible. Deterioration of product or internal damage may occur by the extreme weather conditions
- ⑥ Never clean the product with chemicals such as solvent, benzene or thinner as these may cause fire ignition or the surface deterioration.
- ⑦ BT Inc. can change or adjust the product specification without any notice in order to improve the product.

# Components

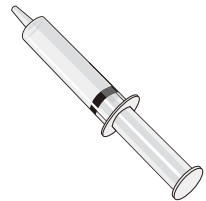
Adult buttocks model



Stand



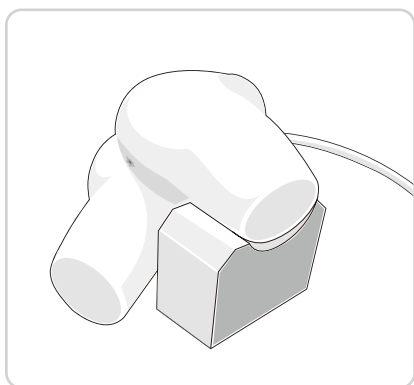
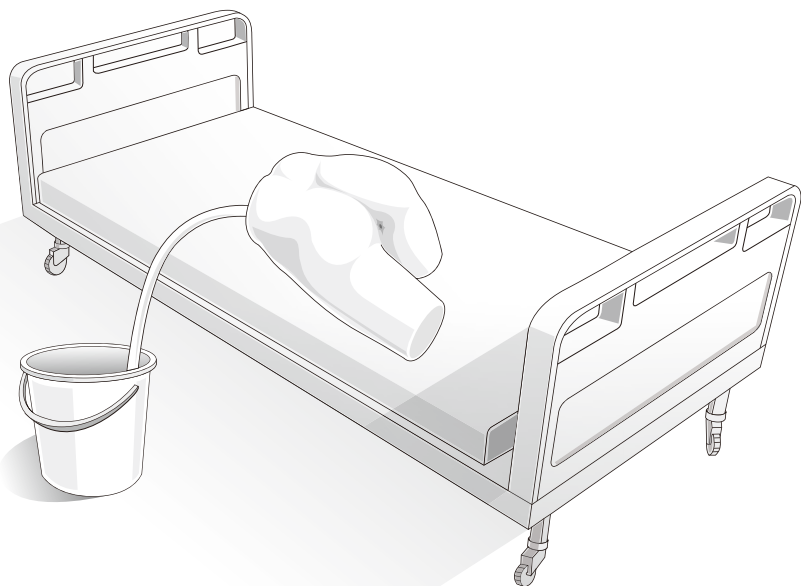
Drain tube



Cleaning Syringe

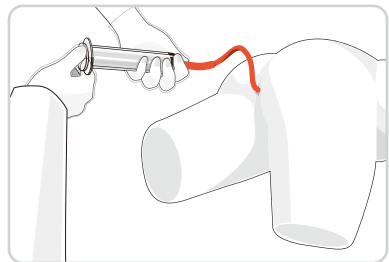
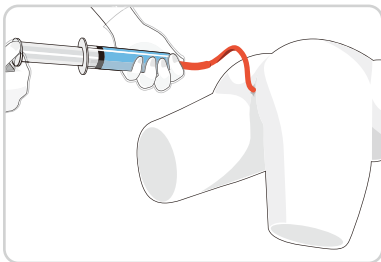
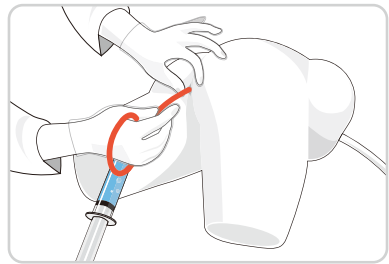
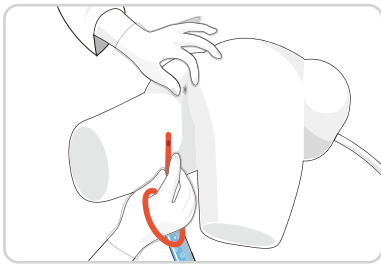
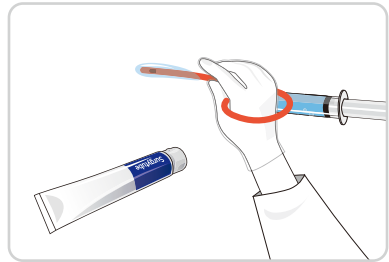
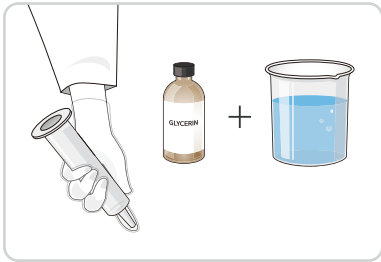
\* Etc. – Storage bag, User manual

## Installation



# Functions

## <Enema with glycerin>

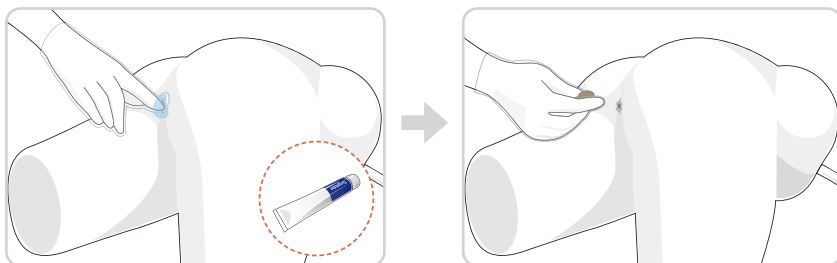


\* Drain tube must be connected during the training.

\* When practicing the enema, be sure to apply enough lubricant to the rectal tube.

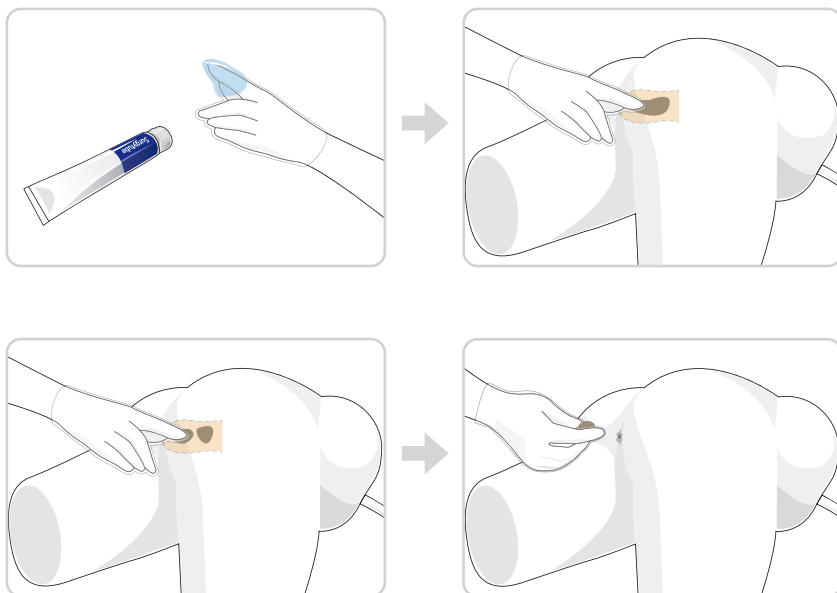
## Functions

### <Training preparation with artificial feces>



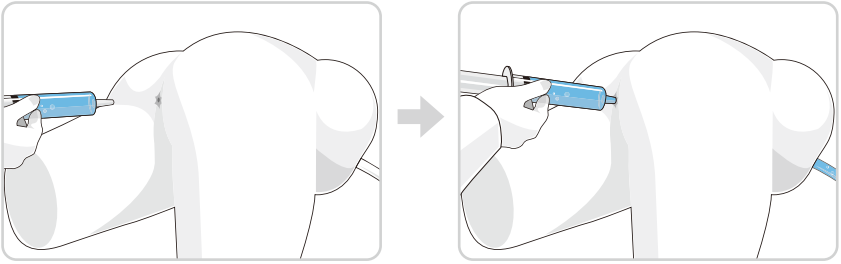
Lubricate anus and insert artificial feces into anus.

### <Artificial feces removal practice>

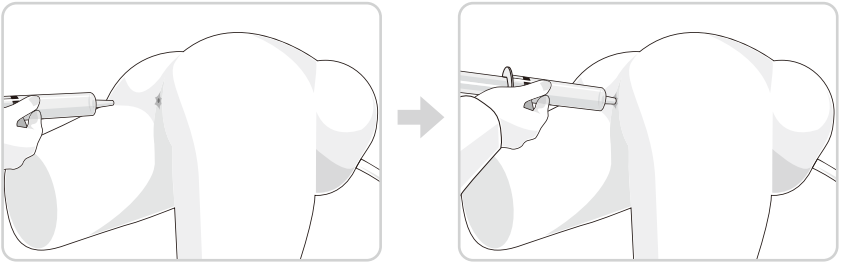


\* Inserted artificial feces must be removed after training to prevent anus clogged.

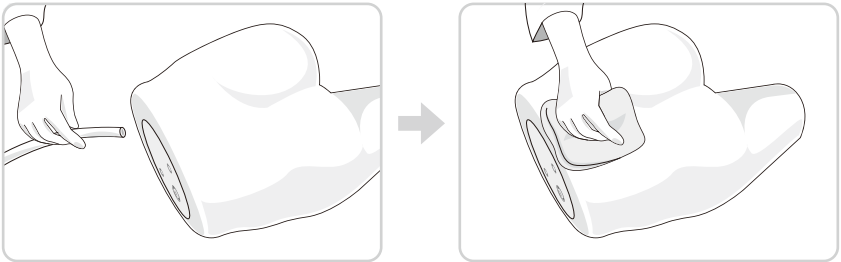
## Maintenance



Fill the syringe with water and inject water into anus to clean. (Repeat 1~2 times)



Fill the syringe with air and inject air into anus to remove left moisture. (Repeat 2~3 times)



Disconnect drain tube and wipe the moisture to make it dry for storage.

**\* Drain tube must be connected during drainage.**



BT-CSEN

# Enema Training Model

A-313, Samsung Techno-valley, 140, Tongil-ro,  
Deogyang-gu, Goyang-si, Gyeonggi-do, 10594, Republic of Korea  
Homepage: [www.btinc.co.kr](http://www.btinc.co.kr) / E-mail: [bt@btinc.co.kr](mailto:bt@btinc.co.kr)  
Tel: +82-2-2038-2903, +82-51-903-1144 / Fax: +82 303-3130-0607

Copyright(c) BT Inc. All rights reserved.