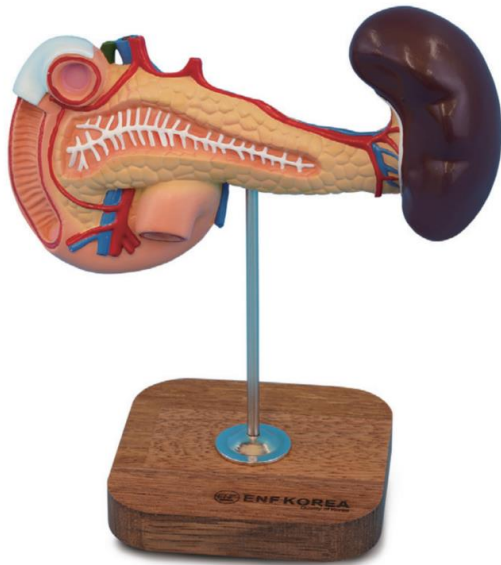


ED34 (PANCREAS DUODENUM AND SPLEEN)



A. Spleen

B. Pancreas

- 1. Head of pancreas**
- 2. Body of pancreas**
- 3. Tail of pancreas**
- 4. Pancreatic duct**
- 5. Accessory of pancreatic duct**

C. Duodenum

- 6. Superior part**
- 7. Duodenojejunal flexure**
- 8. Descending part**
- 9. Minor duodenal papilla**
- 10. Major duodenal papilla**
- 11. Longitudinal fold of duodenum**
- 12. Horizontal part (inferior part)**
- 13. Ascending part**
- 14. Duodenojejunal flexure**
- 15. Superior mesenteric v.**
- 16. Superior mesenteric a.**
- 17. Common bile duct**
- 18. Hepatic portal v.**
- 19. Proper hepatic a.**
- 20. Celiac trunk**
- 21. Splenic a.**
- 22. Splenic v.**
- 23. Inferior vena cava**
- 24. Aorta**