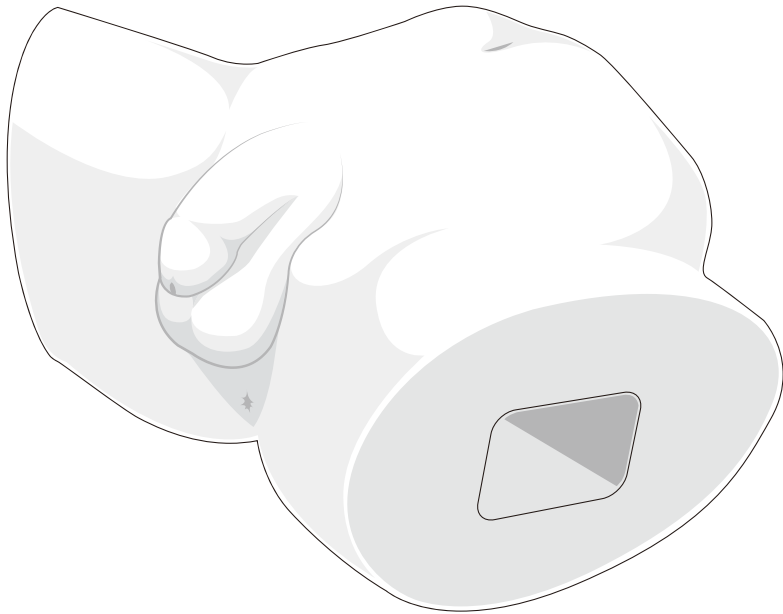


BT-CSCM

Male Catheterization Training Model

USER'S GUIDE



■ Product Information

Product Name	Male Catheterization Training Model
Model Name	BT-CSCM
Manufacturer	BT Inc.
Country of Origin	South Korea

■ Product Specifications

Size	430 x 280 x 200 mm
Weight	3.5kg

■ Customer Service

Web-site	www.btinc.co.kr
Address	Headquarter : A-313 Samsung Techno-valley, 140, Tongil-ro, Deogyang-gu, Goyang-si, Gyeonggi-do, 10594, South Korea
Contacts	Sales : Busan Building 5F, 27, Jeonpo-daero 92beon-gil, Nam-gu, Busan 48404, South Korea
E-mail	Headquarter : +82-2-2038-2903 Sales : +82-51-903-1144 bt@btinc.co.kr

■ Cautions

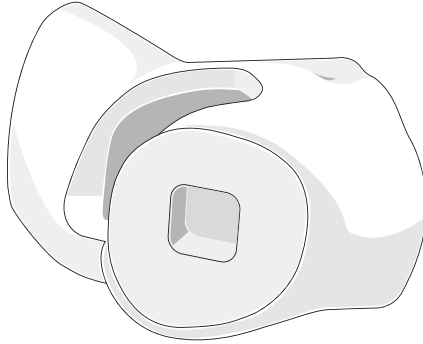
Please read it carefully to ensure correct usage and user's safety through understanding of the product.

- ① Use only components provided or approved by BT Inc.
- ② Do not use the product for other purposes described in the manual.
- ③ If you disassemble or modify the product without any permission by BT Inc, you cannot get the warranty. Also, making imitated or altered products for commercial purposes are prohibited by law.
- ④ Keep the product away from water and moisture.
- ⑤ Do not keep the product near hot or cold environments as possible. Deterioration of product or internal damage may occur by the extreme weather conditions
- ⑥ Never clean the product with chemicals such as solvent, benzene or thinner as these may cause fire ignition or the surface deterioration.
- ⑦ BT Inc. can change or adjust the product specification without any notice in order to improve the product.

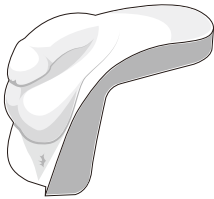
Components



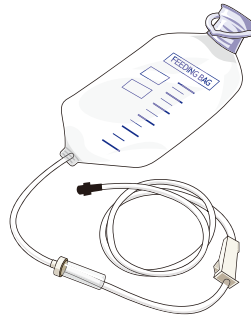
Preputium



Adult buttocks model

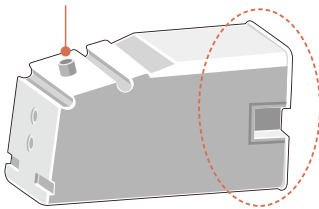


Male external genitalia model

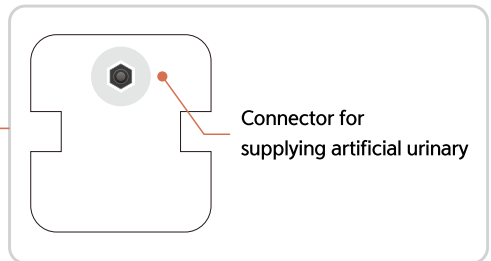


Urinary supply bag

Urinary meatus



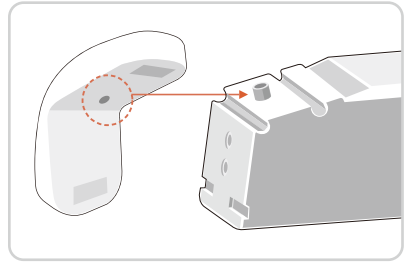
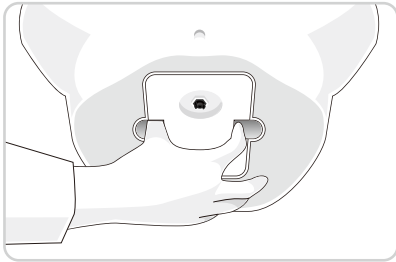
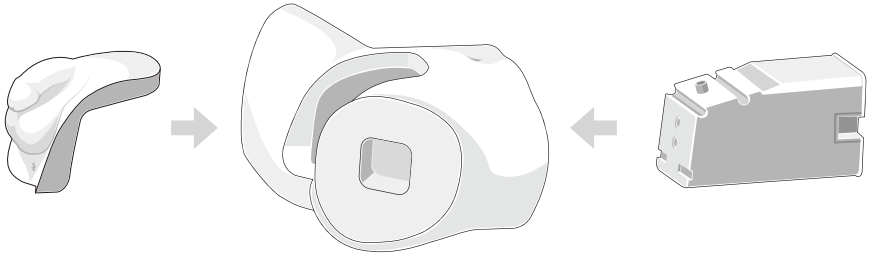
Internal genitalia module



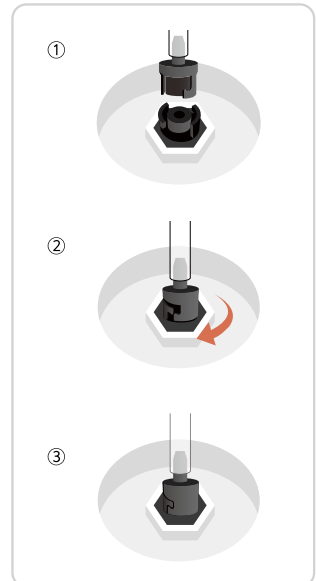
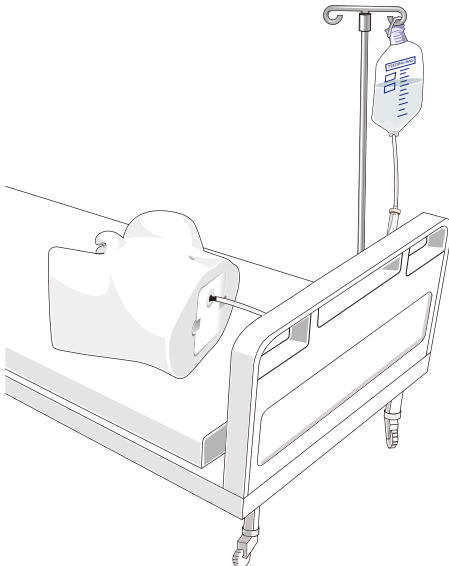
* Etc. – Storage bag, User manual

Installation

<Install male catheterization training model>

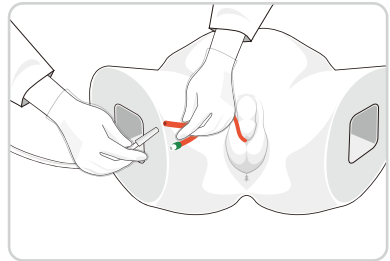
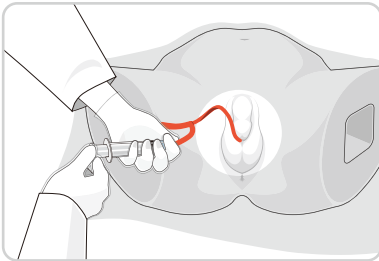
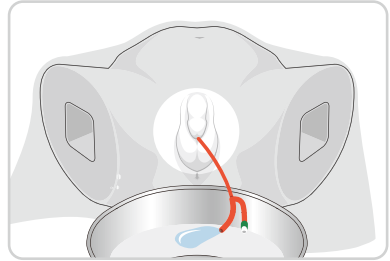
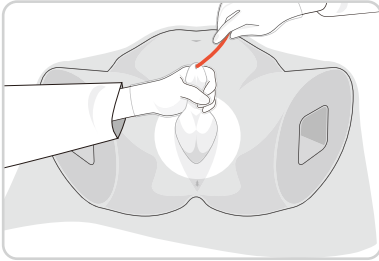
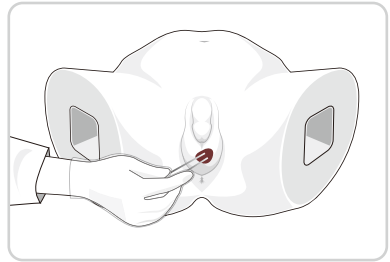
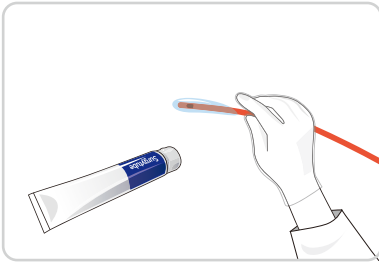


<Install urinary supply bag>



Functions

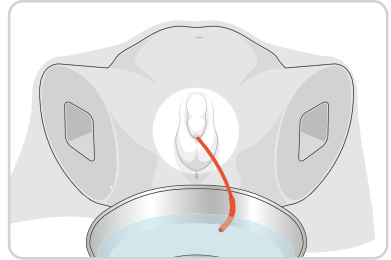
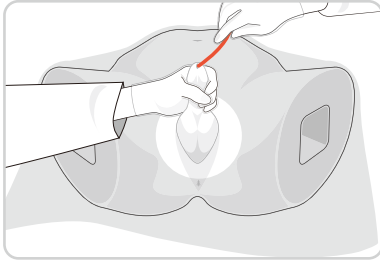
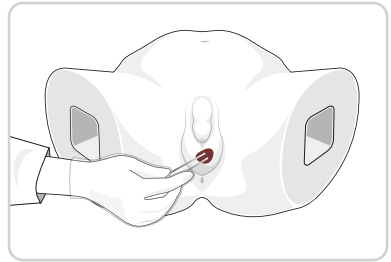
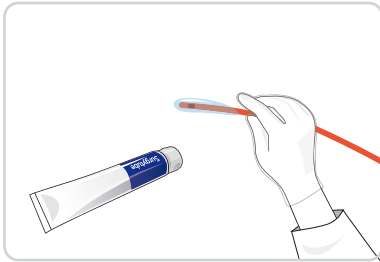
<Indwelling catheterization>



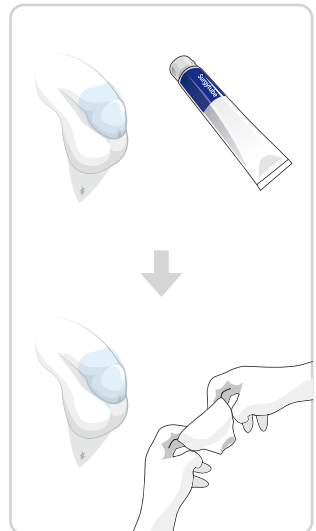
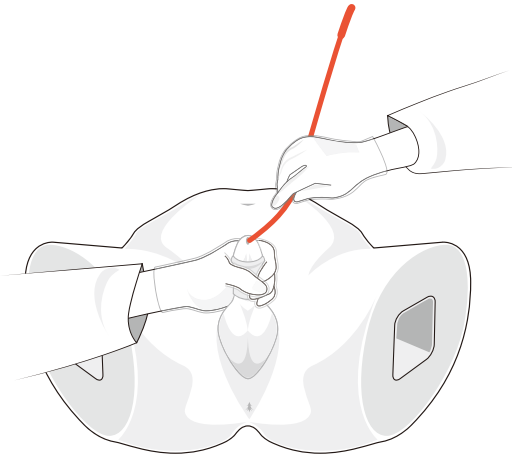
* When practicing urination, be sure to apply enough lubricant to the catheter.

Functions

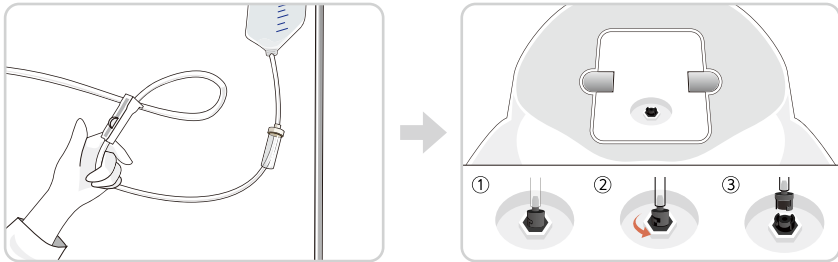
<Nelaton catheterization>



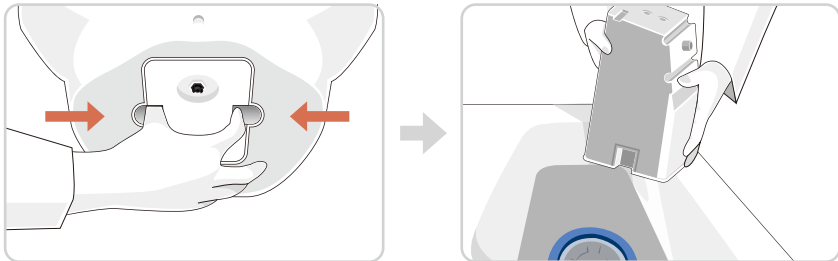
<Practice with preputium>



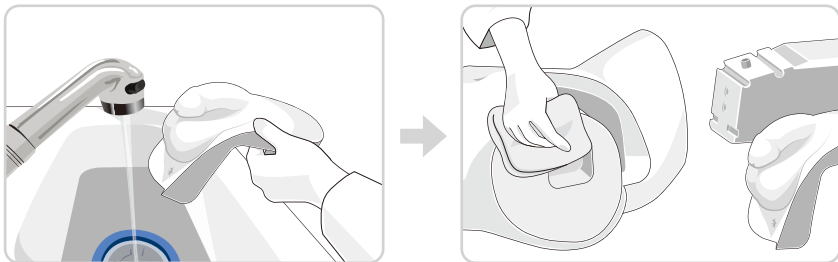
Maintenance



Close the roller clamp of urinary supply bag and remove the urinary supply bag after making the manikin stand.



Take the internal genitalia module out with fingers and flush the left urinary out.



Wash the external genitalia model and wipe the moisture to make it dry.

* After training with preputium, remove , wash it separately and dry it prior to storage.

BT-CSCM

Male Catheterization Training Model

A-313, Samsung Techno-valley, 140, Tongil-ro,
Deogyang-gu, Goyang-si, Gyeonggi-do, 10594, Republic of Korea
Homepage: www.btinc.co.kr / E-mail: bt@btinc.co.kr
Tel: +82-2-2038-2903, +82-51-903-1144 / Fax: +82 303-3130-0607

Copyright(c) BT Inc. All rights reserved.