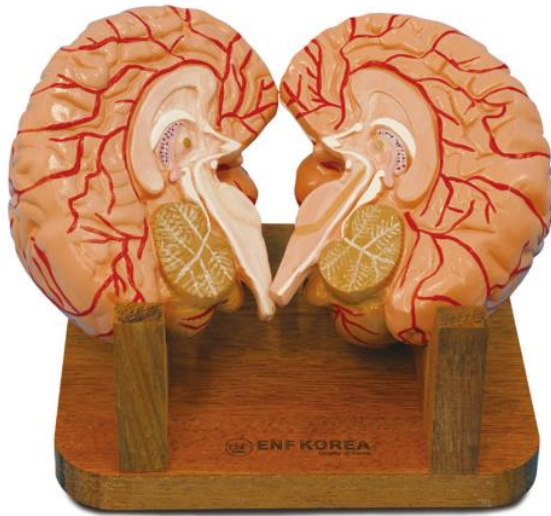


EN26 (BRAIN WITH ARTERIES 2PARTS)



1. Frontal lobe
2. Parietal lobe
3. Occipital lobe
4. Temporal lobe
5. Middle cerebral artery
6. Anterior cerebral artery
7. Medial frontobasal artery
8. Anteromedial frontal branch
9. Callosomarginal artery
10. Mediomedial frontal branch

11. Posteromedial frontal branch
12. Pericallosal artery
13. Precuneal artery
14. Posterior cerebral artery
15. Parietooccipital branch
16. Calcarine branch
17. Posterior temporal branch
18. Anterior temporal branch
19. Intermediate temporal branch
20. Anterior temporal artery
21. Middle temporal artery
22. Posterior temporal artery
23. Artery of angular gyrus
24. Posterior parietal artery
25. Artery of postcentral sulcus
26. Artery of central sulcus
27. Artery of pretcentral sulcus
28. Lateral frontobasal artery
29. Anterior inferior cerebellar artery
30. Posterior inferior cerebellar artery
31. Corpus callosum
32. Septum pellucidum
33. Fornix
34. Choroid plexus of 3rd ventricle
35. Interthalamic adhesion
36. Pineal body
37. Posterior commissure
38. Tectal lamina
39. Anterior commissure
40. lamina terminalis
41. Optic chiasma
42. Cerebral peduncle
43. Pons
44. Medulla oblongata
45. Olfactory bulb
46. Olfactory tract
47. Optic nerve
48. Mamillary body
49. Oculomotor nerve
50. Trochlear nerve
51. Trigeminal nerve
52. Abducent nerve
53. Vestibulocochlear nerve
54. Facial nerve
55. Glossopharyngeal nerve
56. Vagus nerve
57. Accessory nerve
58. Hypoglossal nerve