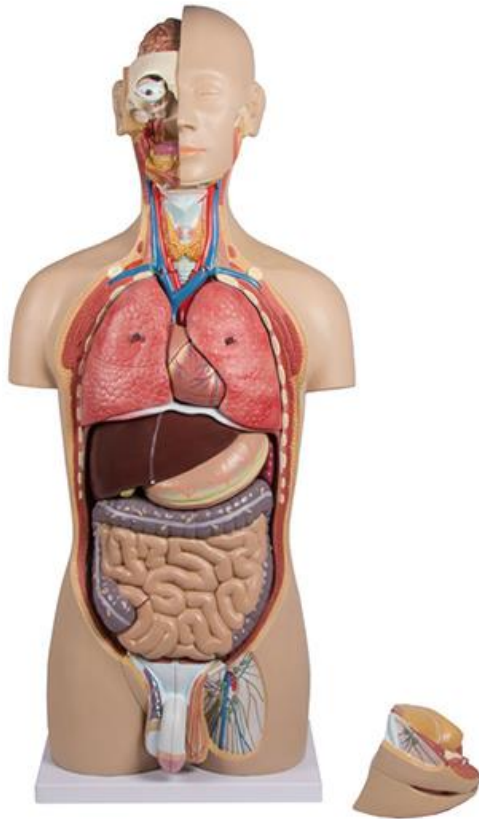


ET11 (85cm Dual Sex Human Torso 27 Parts)



Head

A. Cranial cavity

1. Hemisphere of the brain
2. Anterior cerebral artery
3. Posterior cerebral artery
4. Internal carotid artery
5. Brain foot
6. Pontine
7. Medulla oblongata
8. Cerebellum
9. Brain falx

10. Superior sagittal sinus
11. Lower sagittal sinus
12. Straight sinus
13. Corpus callosum
14. Dome
15. Thalamus

B. Eye socket

1. Eye
2. Lacrimal gland
3. Lacrimal sac
4. levator palpebrae superioris muscle
5. Superior oblique muscle
6. Internal rectus muscle
7. Lower rectus muscle
8. Inferior oblique muscle

9. External rectus muscle

C. Nasal cavity

1. Upper turbinate
2. Middle turbinate
3. Lower turbinate
4. Nasal vestibule

D. Oral cavity

1. Upper jaw
2. Tongue
3. Throat
4. Parotid gland
5. Sublingual gland
6. Submandibular gland

Anterior cervical region

Anterior triangular region

1. Hyoid bone
2. Thyroid hyoid bone membrane
3. Thyroid cartilage
4. cricoid cartilage
5. Thyroid
6. Trachea (trachea)
7. Common carotid artery
8. Internal jugular vein

pleural

A. Left lung

1. Left upper lobe of the lung

ET11 (85cm Dual Sex Human Torso27 Parts)

2. Left lower lobe of the lung

B. Right lung

1. Right upper lobe of the lung

2. Middle lobe of right lung

3. Right lower lobe of the lung

4. Right pulmonary artery

5. Right upper pulmonary vein

6. Right lower pulmonary vein

C. Heart

1. Right atrium

2. Right atrial appendage

3. Superior vena cava

4. Inferior vena cava

5. Oval fossa

6. Coronary sinus opening

7. Right ventricle

8. Lung trunk

9. Pulmonary valve

10. Tricuspid valve

11. Left atrium

12. Left atrial appendage

13. Pulmonary veins

14. Left ventricle

15. Mitral valve

16. Aortic valve

17. Ascending aorta

18. Right coronary artery

19. Left coronary artery

Anterior interventricular branch

20. Left coronary artery

21. Cardiac vein

22. Cardiac Vein

23. Cardiac venules

24. Coronary sinus

A. Liver

1. Left lobe of liver

2. Right lobe of liver

3. Inferior vena cava

4. Gallbladder

5. Bile ducts

6. Proper hepatic artery

7. Hepatoportal vein

8. Square leaf

9. Tailed lobe

10. Ligament teres hepatis

B. Stomach

1. Cardia

2. pylorus

3. Gastric curvature

4. Gastric curvature

5. Gastric fundus

6. Stomach body

7. Pyloric sinus

8. Gastric fold

9. Corner notch

10. Pyloric sphincter

C. Intestine

1. Duodenum

2. Jejunum

3. Ileum

4. Cecum

5. Appendix

6. Ascending colon

7. Transverse colon

8. Descending colon

9. Sigmoid colon

10. Rectum

D. Pancreas

1. Pancreatic head

2. Pancreatic body

3. Tail of pancreas

4. Pancreatic duct

5. Auxiliary pancreatic duct

E. Spleen

F. Lumbar region

ET11 (85cm Dual Sex Human Torso27 Parts)

1. Left kidney
 2. Right kidney
 3. Adrenal gland
 4. Renal cortex
 5. Renal cone
 6. Kidney calyx
 7. Renal calyx
 8. Renal pelvis
 9. Ureter
 10. Inferior vena cava
 11. Abdominal aorta
 12. Sacral plexus
- pelvic cavity
- Female reproductive system
1. Uterus
 2. Vagina
 3. Fallopian tubes
 4. Ovaries
 5. Bladder
 6. Female urethra
 7. labia minora
 8. labia majora
 9. Vestibular bulb
 10. Vestibular gland
 11. clitoris

12. Vestibule
 13. Vagina
- pelvic cavity
- Male reproductive system
1. Testis
 2. Epididymis
 3. vas deferens
 4. Seminal vesicles
 5. Prostate
 6. Urethral bulb
 7. Penis
 8. Scrotal
 9. Corpus cavernosum of the penis
 10. Urethral corpus cavernosum
 11. Bladder
 12. Male urethra
- muscle
- M1. Styloglossal muscle
 - M2. Stylohyoid muscle
 - M3. Posterior abdomen of digastric muscle
 - M4. Anterior abdomen of digastric muscle
 - M5. Mandibular hyoid muscle
 - M6. sternocleidomastoid muscle

- M7. Middle scalene muscle
- M8. Shoulder hyoid muscle
- M9. pectoralis major muscle
- M10. pectoralis minor muscle
- M11. Anterior serratus muscle
- M12. Intercostal muscle
- M13. Diaphragm
- M14. External oblique muscle
- M15. Internal oblique muscle
- M16. Transverse abdominis muscle
- M17. Squareus lumborum muscle
- M18. Lumbar major muscle
- M19. Lumbar minor muscle
- M20. Iliac muscle
- M21. Intra obturator muscle
- M22. levator ani muscle
- M23. Piriform muscle
- M24. External obturator muscle
- M25. Long adductor muscle
- M26. Short adductor muscle
- M27. Trapezius muscle
- M28. Spinal muscle of the head
- M29. superior oblique muscle of the head
- M30. Posterior rectus major muscle

ET11 (85cm Dual Sex Human Torso27 Parts)

M31. Posterior rectus minor muscle

M32. infraspinatus muscle

M33. greater round muscle

M34. Latissimus dorsi muscle

M35. gluteus maximus muscle

back

1. Spinal cord

2. Posterior root

3. Anterior root

4. Spinal Ganglia

5. Spinal nerves