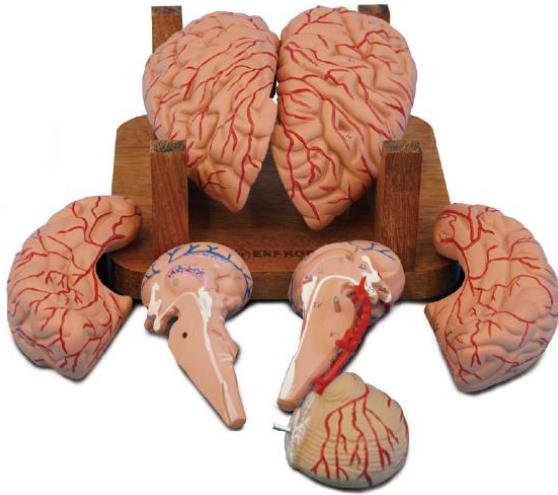


## **EN27A** (*Brain with Arteries 9 Parts Model*)

---



### **I . CEREBRUM**

1. Frontal lobe
2. Parietal lobe
3. Temporal lobe
4. Occipital lobe
5. Insula
6. Hippocampus
7. Lateral ventricles
8. Corpus callosum
9. Fornix
10. Internal carotid artery

11. Middle cerebral artery
12. Anterior cerebral artery
13. Posterior cerebral artery
14. Basilar artery
15. Vertebral artery

### **II. CEREBELLUM**

16. Vermis of cerebellum
17. Hemisphere of cerebellum
18. Superior cerebellar artery
19. Anterior inferior cerebellar artery
20. Posterior inferior cerebellar artery

### **III. DIENCEPHALON**

21. Thalamus
22. Hypothalamus
23. Hypophysis
24. Optic nerve
25. Pineal body
26. Medial geniculate body
27. Lateral geniculate body

### **IV. MESENCEPHALON**

28. Superior colliculi
29. Inferior colliculi
30. Trochlear nerve
31. Oculomotor nerve

### **V . PONS**

32. Trigeminal nerve
33. Abducent nerve
34. Facial nerve and intermediate nerve
35. Vestibulocochlear nerve

### **VI. MEDULLA OBLONGATA**

36. Pyramid
37. Olive
38. Glossopharyngeal nerve
39. Vagus nerve
40. Accessory nerve
41. Hypoglossal nerve